

Introducing ePD's Slide Asset Management Program or "SAM"

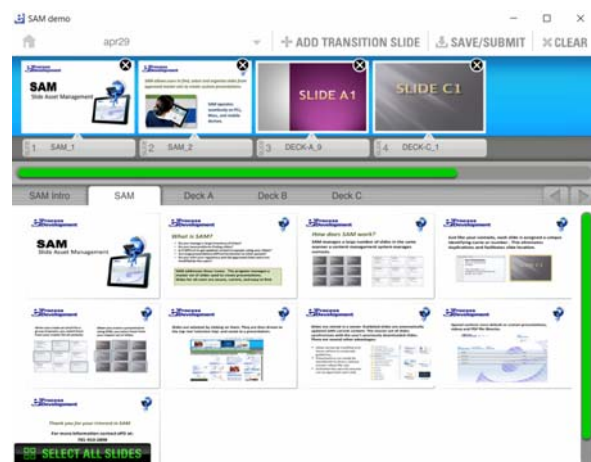
SAM allows users to **Find**, **Select** and **Organize** slides from approved master presentations. The presentation of slides is done using the SAM application which operates seamlessly on PCs, Macs, and mobile devices. The information below reviews SAM operation, features, benefits and reporting options. Please contact us for a demo link following your review of this information. Thank you.

Kurt Rodenhizer, Principal, eProcess Development, 781-910-2898



SAM Provides the Following Solutions:

1. Easy location of slides from master presentations
2. Prevents modification of approved content
3. Synchs master slides from the server to the user
4. Allows for presentation sharing
5. Less wasted time creating presentations
6. Manages video and animation files
7. Cross platform compatibility for PCs, Macs and mobile devices
8. Ability to monitor user activity
9. Security system
10. Runs when offline



How Does SAM Work?



- SAM manages a large number of slides in the same manner a content management system manages contacts
- Slides are assigned unique IDs which are used to manage large slide inventories
- Users can use default presentations or select slides needed to create custom presentations
- Tabs are used to manage the location of default slides, custom slides, videos and PDF documents
- Slides can be advanced using finger swipes, next, back buttons, or the keypad
- SAM provides drawing tools that allow users to mark up the slides

SAM Website Resources:

SAM webpage: <http://eprocessdevelopment.com/sam>

Introductory Video: <https://www.youtube.com/watch?v=wmyldhcqf0>

Slide Management Video1: <https://www.youtube.com/watch?v=Z9ePbGODRh8>

SAM Reporting Examples:

Usage by Presentation Name (sort by most popular presentation)

	A	B	C	D	E	F	G	H	I	J	K	L	M	N	O	P	Q	R	S
1	Total	content_type	title	8/1/2016	8/2/2016	8/3/2016	8/4/2016	8/5/2016	8/6/2016	8/7/2016	8/8/2016	8/9/2016	8/10/2016	8/11/2016	8/12/2016	8/13/2016	8/14/2016	8/15/2016	8/16/2016
2	2451	PRS	Physician Heart Recovery and Cardiogenic Shock	9	15	12	10	11	1	2	9	10	12	13	5	1	1	5	10
3	1018	PRS	Protected PCI Scientific Overview	8	7	16	7	9	3	3	7	6	2	4	4	1		6	1
4	481	PRS	Impella RP Module 1 - Overview	1	2	6	14	4			10	3	4	1					3
5	438	PRS	Impella CP - Abiomed Academy Course Modules	2	5	6	6	4	2	1	3	6	15	2	2	1	1	4	1
6	394	VID	1. Impella Family Animation	6	5	6	4	2	1			4	6	2	1		1	6	2
7	389	PRS	Intro to Protected PCI	4	8	9	5	5		2	1	6	4	1	2				2
8	378	PRS	Impella CP Device		6	4	3	3		1	5	2	11	2	8				4
9	317	PRS	Impella RP Module 2 - Insertion	2	2	3	6				5	2	4	1		1			
10	294	PRS	Impella Kick Off Meeting Presentation	2	3	2	3	5		2	1	9	4	1	1		1	1	1
11	283	VID	Impella 2.5 Animation	2	3	5	1				5	3	1	1					6
12	279	PRS	Training) AIC 5.0 LD - Abiomed Academy Course Modules	4	5	7	1	3			1	2	3	1					3
13	272	PRS	A Growing Population Appropriate for PCI	2	3	6	2	4	3		3	4	6	2	1				2
14	269	PRS	Impella RP Module 3 - Patient Management	1	2	9	9	3	1		3	1	1	1				1	
15	213	PRS	A Growing Population in the Cath Lab	1	1	2	1	2	1	1	4	2	5	2	1		1	1	
16	199	PRS	Science of Hemodynamic Support	2	4	4	5		1	1	2	3		6	1	1			3
17	176	PRS	Clinical Guidelines	5	3	2	1	2	1		3	5	2		2				2
18	175	VID	Impella 5.0 Insertion - Axillary Insertion Kit	2	1	1		3	1	1	1	9	2	4	4				1
19	165	PRS	Cost Effectiveness	1	1	6	9	2	1		1	1	1	3					3

Usage by User (sort by highest use)

B	C	D	E	F	G	H	I	J	K	L	M	N	O	P	Q	R	S	T
FirstName	Territory	Total	8/1/2016	8/2/2016	8/3/2016	8/4/2016	8/5/2016	8/6/2016	8/7/2016	8/8/2016	8/9/2016	8/10/2016	8/11/2016	8/12/2016	8/13/2016	8/14/2016	8/15/2016	8/16/2016
Lisa	CC - Heartland	108	21	39	5	9	13		4	7	9							1
Jennifer	SE	80	27	2	9	10	2		3	11	6		3	7				
Matt	NE/SE - RTM	76	1	5	17				6	5	36							4
Jason	West	62	8	8	1	22	1		1	14	7							
Alex	CE - NE	51		2			3	16	9		15							6
Heather	CC - Mid-Atlantic	48	1						9	20	11							7
Cheryl	SE - CC	45			6	3					22	14						
Jared	Mid-Atlantic	44	5	3	1	2		7	12	6	8							
Rosie	Heartland - Senior CAM	42					15		4			15	3			5		
Brent	Heartland - CAM	41		2		20		15				4						
Michael	SE - ACAM	34	2			3			6	5				2			13	3
Andrew	West - CE	34	7	5	11		6				5							
Matthew	CC - SE	34							9	14	11							
Jeff	West - CC	33	2	15	5						5		1		2		3	
Robert	CC - SE	33							19	14								
Scott	West - CE	31					7		3					4			15	2

Usage by Custom Slide Selection

AIC 2.5

Vivian		C1.4
Tiana	West - CE	C5.17 C4.10 C4.11 C4.17 C4.18 C4.20 C4.24 C4.25
Craig	Per Diem - MidSouth	C1.4
Craig	mid-south	C1.4
Craig	Heartland - CE	C1.4
Cathy	Heartland - RTM	C1.2 C1.7 C1.8 C1.4 C1.12
Cathy	Heartland - RTM	C1.2 C1.7 C1.8 C1.4 C1.12
Cathy	Heartland - RTM	C1.2 C1.7 C1.8 C1.4 C1.12
Cathy	Heartland - RTM	C1.2 C1.7 C1.8 C1.4 C1.12
Cathy	Heartland - RTM	C1.3 C1.4 C1.7 C1.9 C4.7 C2.7 C3.5 C4.9 C4.11 C4.12 C5.8 C5.11 C5.12 C5.13 C5.14
Cathy	Heartland - RTM	C1.6
Torsten	EU	C2.7
Marianne	West - CC	C1.6 C3.11 C3.9 C4.24 C5.16 C5.17 C5.20 C5.25 C5.29 C5.38
Marianne	West - CC	C4.5 C4.6 C4.7
Eric	SE - CAM	C1.1 C2.2 C1.3 C1.4 C1.5 C1.6 C1.7 C1.9 C4.17 C4.18 C4.19 C4.20 C4.24 C2.1 C2.2
Eric	SE - CAM	C1.3 C1.4 C4.5 C4.6 C1.6 C3.6 C3.12 C1.8 C2.12